



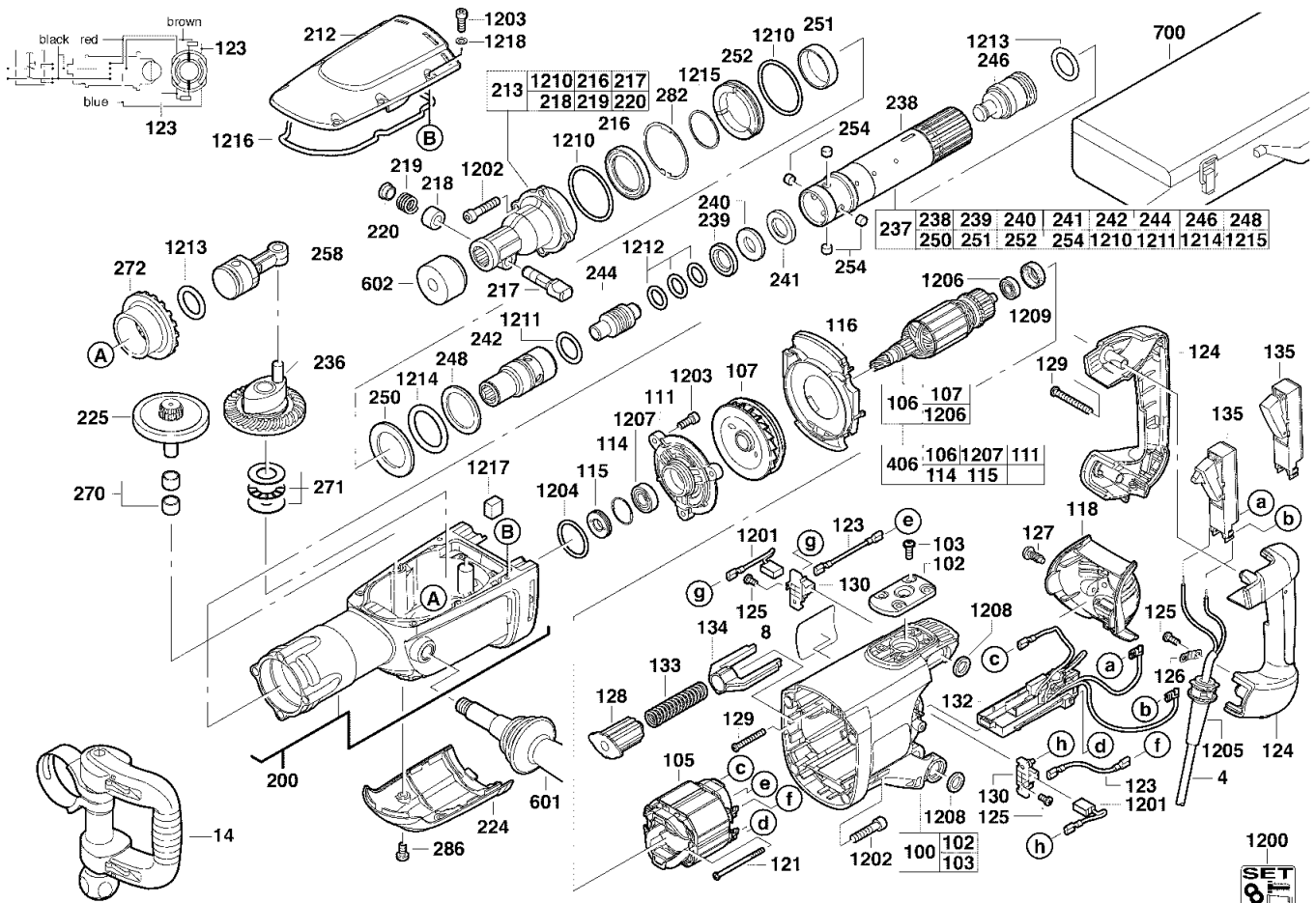
# A & M Electric Tools

# Rotary Hammers

Ind	Product No.	Type	Voltage	Country
a	4000375706	950H	220-240V	IN2
b	4000375676	5340-20	120V	USC

Ind	Product No.	Type	Voltage	Country

Milwaukee				
5340-21				
950 H				
Exp.view No.	Version	Date	Page	
4926 3757 09	0010	10.11.04	2/3	



Pos	Index	Quanti	Article No.	Designation
0237	ab.....	1	4931375383	SPINDLE
0238	ab.....	1	4931375776	SPINDLE SLEEVE
0239	ab.....	1	4931375411	THRUST COLLAR
0240	ab.....	1	4931375412	BACK-PRESSURE RING
0241	ab.....	1	4931375777	ATTACHMENT RING
0242	ab.....	1	4931375428	DRIVER
0244	ab.....	1	4931375576	SNAP DIE
0246	ab.....	1	4931375782	PERCUSSION BODY
0248	ab.....	1	4931375416	ATTACHMENT RING
0250	ab.....	1	4931375418	WASHER
0251	ab.....	1	4931375419	BALL RACE
0252	ab.....	1	4931375420	THRUST COLLAR
0254	ab.....	4	4931375787	DRIVER
0258	ab.....	1	4931375380	PISTON COMPL.
0270	ab.....	2	4931621847	NEEDLE BEARING
0271	ab.....	1	4931375400	THRUST BEARING
0272	ab.....	1	4931375437	SPINDLE BEVEL GEAR
0282	ab.....	1	4931624235	RETAINING RING
0286	ab.....	2	4931624236	SCREW
0406	a.....	1	4931375526	ARMATURE
0406	b.....	1	4931375568	ARMATURE
0601	a.....	1	4931375516	HANDLE

Pos	Index	Quanti	Article No.	Designation
0601	b.....	1	4931375828	HANDLE
0602	ab.....	1	9170086960	DUST GUARD CAP
0700	a.....	1	4931375502	CARRYING CASE
0700	b.....	1	4931375762	CARRYING CASE
1200	a.....	1	4931375659	MAINTENANCE SET
1200	b.....	1	4931375791	MAINTENANCE SET
1201	ab.....	1	4931375556	CARBON BRUSH SET
1202	ab.....	8	4931624234	SCREW
1203	ab.....	9	4931624276	SCREW
1204	ab.....	1	4931624237	SEAL RING
1205	ab.....	1	4931392174	PROTECTING COVER
1206	ab.....	1	4931341741	BALL BEARING
1207	ab.....	1	4931398189	GROOVED BALL BEAR.
1208	ab.....	4	4931624170	SEAL RING
1209	ab.....	1	4931317212	RUBBER SLEEVE
1210	ab.....	2	4931624156	SEAL RING
1211	ab.....	1	4931624161	SEAL RING
1212	ab.....	3	4931624155	SEAL RING
1213	ab.....	2	4931624158	SEAL RING
1214	ab.....	2	4931624157	SEAL RING
1215	ab.....	1	4931624153	SPRING RING
1216	ab.....	1	4931375506	GASKET

Repairs/modification and testing of electric power tools are to be carried out by specialists. The safety regulations according to DIN/VDE/CEE/AFNOR and other regulations valid in the different countries are to be observed.

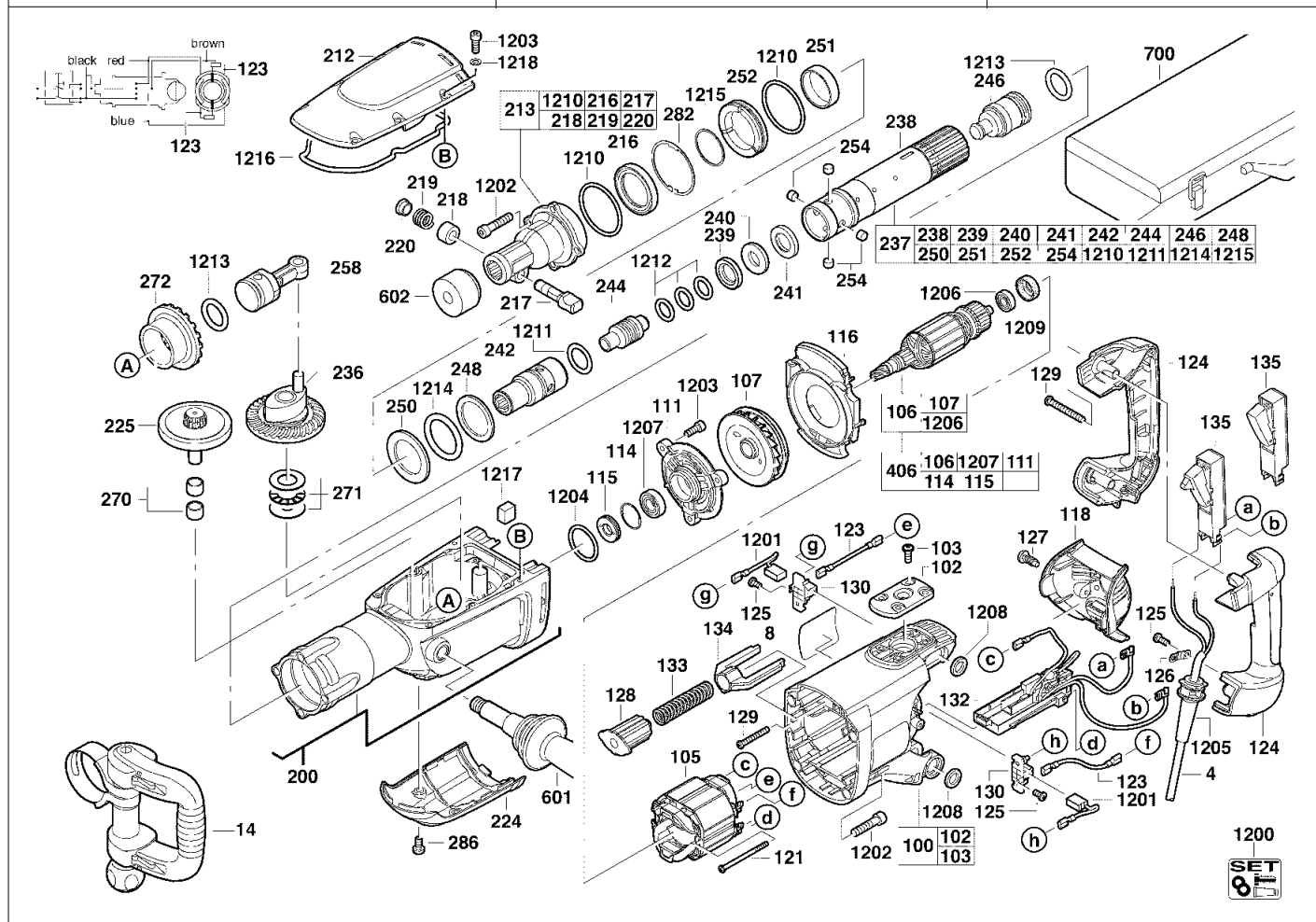
# A & M Electric Tools

# Rotary Hammers

Ind	Product No.	Type	Voltage	Country
a	4000375706	950H	220-240V	IN2
b	4000375676	5340-20	120V	USC

Ind	Product No.	Type	Voltage	Country

<b>Milwaukee</b>			
<b>5340-21</b>			
<b>950 H</b>			
Exp.view No.	Version	Date	Page
4926 3757 09	0010	10.11.04	3/3



Pos	Index	Quanti	Article No.	Designation
1217	ab.....	1	4931375508	FELT
1218	ab.....	6	4931603515	SEALING WASHER

Pos	Index	Quanti	Article No.	Designation